

## Events:

21<sup>st</sup> September 2010  
**CADMOULD® 3D-F User Meeting 2010**  
Mercure Hotel Aachen Europaplatz

29<sup>th</sup> and 30<sup>th</sup> September 2010  
**Kunststoffen 2010**  
Veldhoven, NL

### CADMOULD® 3D-F Day Seminars

- 5<sup>th</sup> Oktober 2010, Stuttgart, Germany
- 6<sup>th</sup> Oktober 2010, München, Germany
- 7<sup>th</sup> Oktober 2010, Nürnberg, Germany

27<sup>th</sup> Oktober - 3<sup>rd</sup> November 2010  
**K 2010**  
Hall 11, Booth F21  
Trade Fair Düsseldorf, Germany

1<sup>st</sup> - 4<sup>th</sup> December 2010  
**Euromold 2010**  
Trade Fair Frankfurt, Germany

## NEW!

## CADMOULD® 3D-F One-day seminars

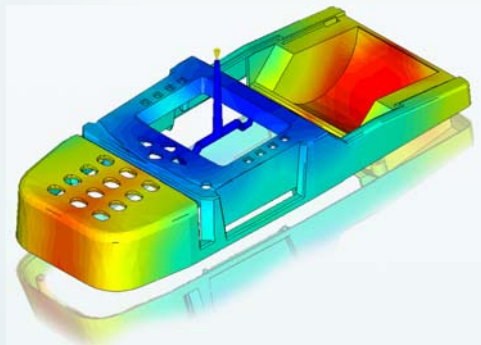
From the beginning of October 2010 **Simcon** organizes one-day seminars all over Germany.

These one-day seminars include an introduction into the package **CADMOULD® 3D-F WARP EXPERT & COOL**. The following main topics are covered:

- Filling
- Packing
- Fibre orientations
- Shrinkage & Warpage
- Cooling

After the seminar a four-week test installation will be provided. During this period the user can test the software optimizing his own projects concerning runner system, filling pressure and clamping force. Part defects such as air traps can be avoided. Furthermore it is

possible to simulate shrinkage and warpage of the part even with fibre reinforced materials as well as the cooling system of the mould. During the test installation the user gets full access to support via e-mail or telephone.



**We are looking forward to your application!**

Application form:

[www.simcon-worldwide.com](http://www.simcon-worldwide.com)

Tel.: +49 (0) 2405 64 571 0

## NEW! CADMOULD® 3D-F ESSENTIAL

Injection moulding simulation is now possible for everybody - **CADMOULD® 3D-F ESSENTIAL** is available.

The calculation of form filling is the first and most important issue in injection moulding simulation.

With **CADMOULD® 3D-F ESSENTIAL** the user can optimize the position and number of the injection points, reduce air traps and weld lines and optimize the filling process.

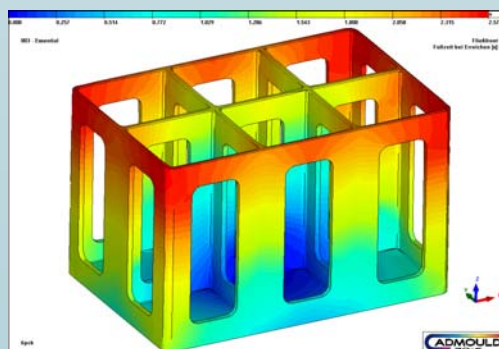
**CADMOULD® 3D-F ESSENTIAL** calculates:

- Filling pattern
- Flow front temperatures
- Pressure distribution
- Filling problems
- Demoulding time

**CADMOULD® 3D-F** uses the patented Simcon 3D Framework (3D-F) method providing advantages as follows:

- Easy and automatic meshing
- Fast calculation
- Exact results

You can learn **CADMOULD® 3D-F ESSENTIAL** for yourself without the need of training. We deliver the software with comprehensive training material explaining each function in detail. Within a few minutes, you can calculate your first project.



Filling picture



## Injection moulding simulation

### Tips & Tricks

#### Display Options - Mesh

After importing of STL data **CADMOULD® 3D-F** automatically performs a quality check.

By activation of the display options „Branch“ and „Border“ STL defects become visible.

By this it is possible to visualize overlapping, gaps and not connected areas of the part.

**Advertising price until 30<sup>th</sup> September 2010: just 1.990 € plus VAT**